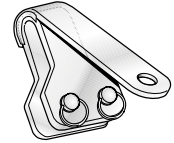
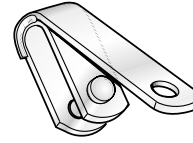
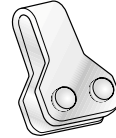
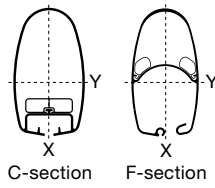


# Forestay and backstay toggles



S = Single toggle D = Double toggle

S = Single toggle D = Double toggle

## C-sections and F-sections

Wire dia. mm	Mast section	Forestay and backstay toggle				Art. No.	Max. triatic-wire dia.
		Art. No.	Width mm	Masthead mm	Term. pin (bush) dia. mm		
4	C156	517-001-01 S	30	10	8		
5	C156, C175, F176	517-001-01 S	30	10	8		
	C193, F194	517-003-01 D	30	10	10		
6	C156, C175, F176	517-046-01 S	30	12	10		
	C193, F194, C211	517-006-01 D	30	12	10		
	F212, C227, F228						
	C245, F246, C264	517-046-04 S	39	12	10		
7	F265						
	C175, F176, C193	517-004-01 S	30	14	12	517-012-01 S	6
	F194, C211, C211 Tpr	517-006-01 D	30	14	12	517-014-01 D	6
	C227, C227 Tpr						
	C245, F246, C 264	517-048-03 S	36	14	12		
8	F265						
	C245, F246, C285	517-048-01 S	36	14	14		
	F286, C245 Tpr	517-009-01 D	38	16	16		
	C264 Tpr, C285 Tpr						
	C245, F246, C264	517-060-03 S	38	16	16	517-015-01 S	6
	F265, C285, F286	517-009-01 D	38	16	16	517-016-01 D	6
	C304, F305						
	C175, F176, C193	517-005-01 S	30	14	14	517-013-01 S	6
	F194, C211, F212	517-006-01 D	30	14	12		
	C227, F228						
10	C211, F212, C 227	517-005-01 S	30	14	14	517-013-01 S	6
	F228						
	C245, F246, C264	517-060-03 S	38	16	16	517-015-01 S	6
	F265, C285, F286	517-009-01 D	38	16	16	517-016-01 D	6
	C304, F305	517-017-01 S	47	20	16		
12		517-019-01 D	47	20	16		
	C245, F246, C 264	517-026-01 S	38	16	19	517-028-01 S	6
	F265, C285, F286	517-027-01 D	38	16	19	517-029-01 D	6
	C304, F305, C321, F324	517-052-01 S	47	20	19		
		517-020-01 D	47	22	19		
14	C304, F305, C321, F324	517-053-01 S	47	22	22		
		517-058-01 D	49	22	22		

Tpr = Tapered top