

Keel-stepped and deck-stepped masts,

C-sections and F-sections

The T-base and deck ring systems are made to fit both Seldén's conventional mast sections and their matching furling sections. They are also made to create deck order among halyards. The blocks are fastened to the T-base or deck ring with a removable stainless steel shaft, which makes it easy to rearrange the blocks. The deck ring incorporates a state-of-the-art mast wedging system.



Eyes for halyard stowage



*T-base for deck-stepped masts with integrated block fastenings.
Just remove stainless steel shaft to fit up to eight blocks.
A two-piece shaft is available for narrow deck layouts.*

Keel-stepped masts,

C-sections and F-sections

The deck ring system for keel-stepped masts has a multi-purpose design. The forward composite wedge with rubber chocking is removed while bringing the mast through the deck ring. When refitted and tightened it slides down/aft and secures the mast.

The tie rod has four fixed settings, each with plenty of leeway for adjustment.

The T-base for keel-stepped masts can be adjusted longitudinally (fore-and-aft) with the mast still in place. Just ease off the rigging and turn the adjusting screw of the T-base until the required prebend and rake are achieved.

The underside of the heel plug is convex, in order to allow rake without subjecting the mast section to point loading.



Remove the wedge.



Step the mast and replace the wedge.



Secure the mast by tightening the nut on the wedge.



Block stand-up, rubber.



Adjustable T-base. Adjusts easily with mast still in place.



Convex underside of heel plug – distributes compression load evenly on the mast section.

Deck ring system

Mast section	Deck ring, incl. 4 halyard attachments + axle for integrated blocks*, (dim., mm)	Separate block-axle	Separate 2-piece block axle	Locking screw for block axle	Block stand-up rubber	Wedge	Shaped rubber wedges	
							Fore 1 off	Aft 2 of
C156	533-030-01 (275 x 240)	166-274	-	155-624	319-512	530-208	530-209	530-221
C175, F176	533-029-01 (316 x 242)	166-270	-	-			319-669	530-210
C193, F194					530-209	530-212		
C211, F212	533-022-01 (349 x 300)	166-221	166-260-01	-	319-680	530-211	530-210	530-213
C227, F228							530-209	530-212
C245, F246	533-023-01 (401 x 344)	166-224	166-261-01	155-609	-	530-214	530-210	530-213
C264, F265							530-209	530-212
C285, F286	533-024-01 (450 x 372)	-	-	-	-	530-216	530-210	530-213
C304, F305							530-209	530-212
C321, F324	533-039-01 (520 x 382)	166-295	n/a	153-014	-	530-216	530-241	530-242
C365, F370	533-038-01 (573 x 410)	166-229	n/a	-	-	530-218	C365 530-245 F370 530-241	
F406	533-036-01 (603 x 403)	n/a	n/a	n/a	n/a	n/a	530-575	530-575

* Blocks are not included.



Deck ring with moulded mast coat.

Tie rods with four fixed settings – plenty of leeway for adjustment.



Mast coats (moulded), C-sections and F-sections

C-sections and F-sections

Mast section	Mast coats Art. No.	Hose clips, Art. No.	
		Upper	Lower
C156	530-053	312-201	312-204
C175, F176	530-054	312-202	312-205
C193, F194	530-055	312-203	312-206
C211, F212	530-056	312-204	312-206
C227, F228			
C245, F246	530-058	312-205	2 x 312-203
C264, F265	530-060	312-207	2 x 312-205
C285, F286			
C304, F305	530-038 + 530-040 (canvas)	-	2 x 312-205
F324			

Replacement coats,

Can be fitted with the mast stepped.

Section	Repl. coat	Section	Repl. coat
C156	530-053-51	C245, F246	530-058-51
C175, F176	530-054-51	C264, F265	530-058-51
C193, F194	530-055-51	C285, F286	530-060-51
C211, F212	530-056-51	C304, F305	503-060-41
C227, F228	530-056-51	-	-

Tie-rod fittings	Tie-rod		T-base			
	Cover	Adjustable	T mm	Fixed	T mm	
508-259-01	508-260	510-152-01	12	-	-	
		510-134-01		510-136	33	
		510-143-01	20	510-141	44	
508-259-03	-	510-125-02	45	-	-	
		-	-	-	-	
Tie rod fitted to keelson	-	510-190-01	70	-	-	



Mast jack system

A mast jack from Seldén ensures that you always retain the right rig tension for racing. It also lets you relieve the load on the rig and boat when you are in port. The mast jack system consists of a hydraulic cylinder located inside the mast. The cylinder piston moves down vertically through the heel of the mast to a steel plate in the boat's T-base, thereby lifting the mast and increasing the tension.

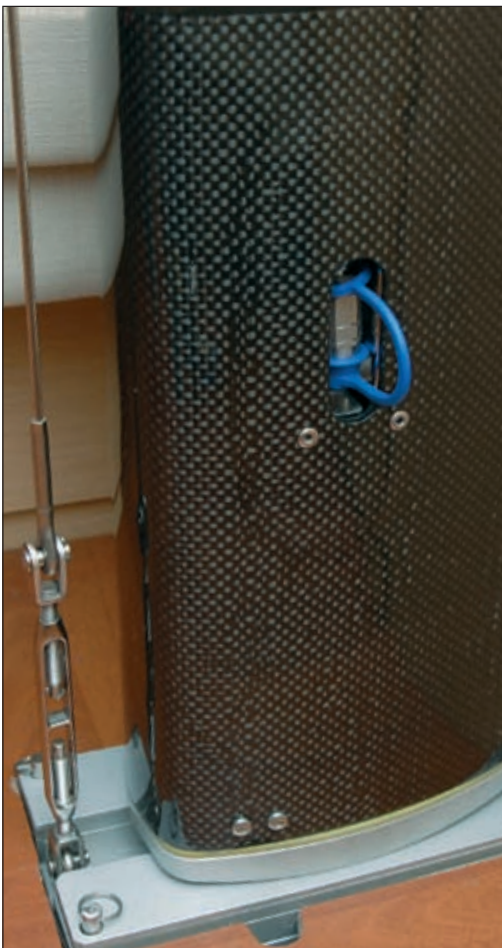
In order to make it easier to jack up the mast, the system includes a two-stage pump that switches to its lower gear as the pressure increases. When the mast reaches its upper position, shims are placed between the heel and the T-base. Release the pressure and remove the pump. Now, the rig

is set in accordance with the predetermined requirements. So is the boom height, I-measurement and other rating measurements recorded by the measuring official.

The pump is connected to the cylinder with stainless steel couplings, and can easily be disconnected and left ashore prior to racing. The hydraulic hose is then stored in a purpose-designed hose garage to keep it out of the way. The hose garage itself is fitted inside the mast.

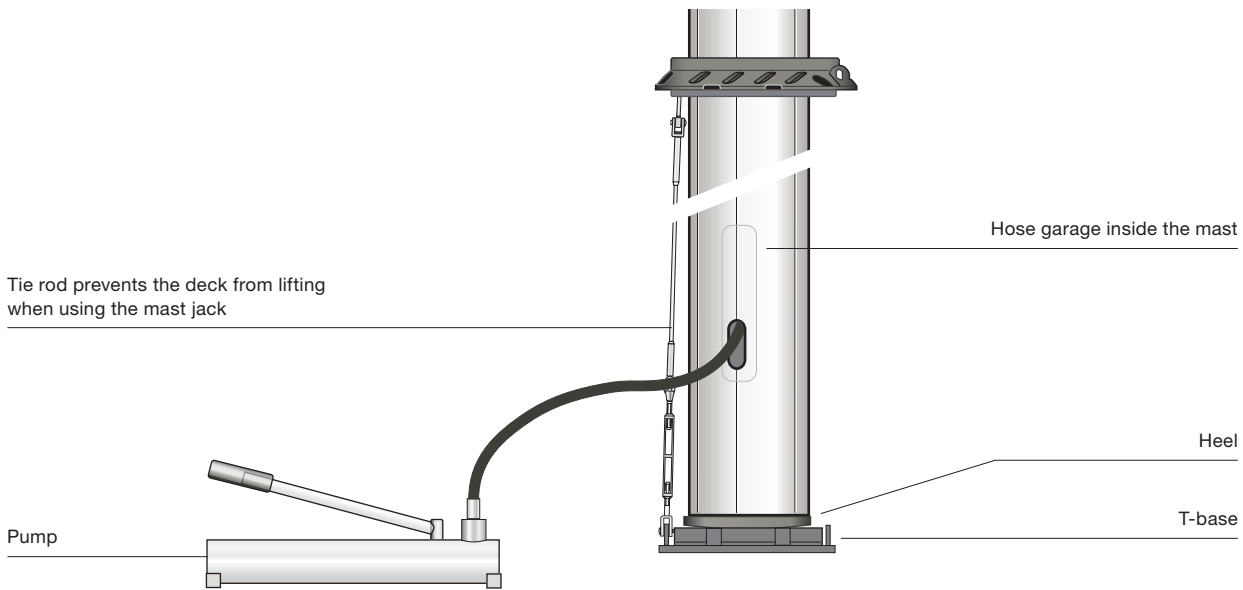
The T-base has the same pattern of holes as Seldén's standard T-base, and its position can be adjusted in fore and aft direction to obtain the optimal mast rake.

The hose is stored in a hose garage...



...and can easily be fitted to the pump to adjust the rig tension.





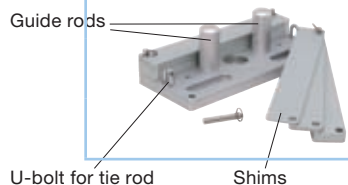
Technical specifications

System	Mast extrusion	Max pressure (bar)	Max working load (kN)
D65/300	C193 CC192	300	100
D63/400	C211-C245 CC210-CC244	400	125
D80/400	C264-C304 CC263-CC303	400	200

Mast jack cylinder fitted on mast heel and 2-metre hose with quick coupling (male)	Mast extr.	Art. No.	Mast extr.	Art. no
	Alu-minium		Carbon	
	C193	502-196-01	CC192	502-196-03
	C211	502-190-01	CC210	502-190-03
	C227	502-191-01	CC226	502-191-03
	C245	502-192-01	CC244	502-192-03
	C264	502-193-01	CC263	502-193-03
	C285	502-194-01	CC284	502-194-03
	C304	502-195-01	CC303	502-195-03

Pump with manometer	System	Art. No.
	D65/300	550-150-01
	D63/400	550-160-01
	D80/400	550-160-02

T-base with shims and U-bolts for attaching tie rod	System	Art. No. (dim., mm)
	D65/300	510-208-01 (205x140x15)
	D63/400	510-180-01 (300x125x15)
	D80/400	510-185-01 (370x160x25)



Tie rod kit, includes conversion parts for standard deck ring	Mast extrusion	Art. No.
	C193, CC192	601-003-54
	C211, C227, CC210, CC226	508-309-02
	C245, CC244	508-309-03

Accessories	Art. No.
Hose garage, including pop rivets	507-537-01
Shim, 2 mm (D65/300)	510-209
Shim, 5 mm (D65/300)	510-210
Shim, 10 mm (D65/300)	510-211
Shim, 2 mm (D63/400) (Optional)	510-214
Shim, 5 mm (D63/400)	510-181
Shim, 10 mm (D63/400)	510-182
Shim, 15 mm (D63/400)	510-183
Shim, 2 mm (D80/400) (Optional)	510-215
Shim, 5 mm (D80/400)	510-186
Shim, 10 mm (D80/400)	510-187
Shim, 20 mm (D80/400)	510-189
Locking bolts for shims (D65/300)	165-107
Locking bolts for shims (D63/400)	165-207
Locking bolts for shims (D80/400)	166-011
1/4" hydraulic hose, 2 metres, with couplings	540-965-01
Quick coupling (male)	540-966
Protective plastic cover for 540-966	540-968
Quick coupling (female)	540-967
Protective plastic cover for 540-967	540-969
Sealing washer for coupling	540-885
U-bolt for securing tie rod	508-023-02
Silicone spray, 250 ml, for rubber wedges for deck ring	312-506
Safety wire with Talurit eye. Some racing rules stipulate safety wire between mast and T-base.	508-010-10

Deck-stepped masts,

C-sections and F-sections



Block stand-up, stainless.

Art. No. 308-017.



Block stand-up, rubber.

Art. No. small 319-512.

Art. No. medium 319-669.

Art. No. large 319-680.

T-base

Mast section	T-base (dim., mm)	Rail (stainless) for attaching block, (dim., mm)	Plug	Cable hose (Ø 48 mm)	Block stand-up stainless spring
C211, F212 C227, F228 C245, F246	510-136-01 (275 x 125)	508-727 (285 x 135)	319-649	319-620-02	308-017
C264, F265 C285, F286 C304, F305	510-141-01 (380 x 160)	508-728 (390 x 180)			
C321, F324 C365, F370	510-125-01 (480 x 180)	508-179 (415 x 190)	-	-	-

T-base with integrated block attachment

Mast section	T-base, including halyard attachment + axle for integrated blocks*, (dim., mm)	Separate block axle	Separate 2-piece block axle	Locking screw for block axle	Block stand-up rubber	Cable hose
C156 C175, F176 C193, F194	510-157-01 (225 x 151)	166-272	-	155-807	319-512	319-639-01 (Ø42 mm)
C211, F212 C227, F228 C245, F246	510-135-01 (300 x 220)	166-221	166-260-01	155-624	319-669	319-620-02 (Ø48 mm)
C264, F265 C285, F286 C304, F305	510-142-01 (388 x 264)	166-228	166-262-01	155-613	319-680	

* Blocks are not included.



Convex underside of heel plug – distributes compression load evenly on the mast section.



Small protrusion on top side of heel plug – acts as spacer for cable conduit. Allows cables to run freely.



Cable hose prevents moisture from entering the cabin.

*T-base + hose,
Art. No. 510-135-01
+ 319-620-02.*



Plugged T-base with built-in block fittings. Cables exit through mast heel for deck connections.



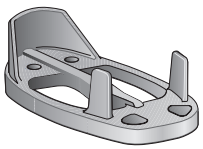
T-base, Art. No. 510-136-01.

Cables can be led through the cable hose and further down in the compression post. They may also exit straight through the heel plug for deck connections.

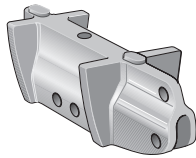


Mast heels for

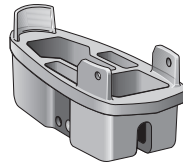
P-sections, E-sections, D-sections and R-sections



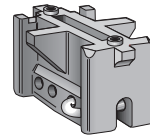
Heel plug,
Art. No. 502-061.



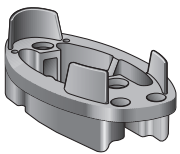
Mast heel for hinging,
Art. No. 502-113.



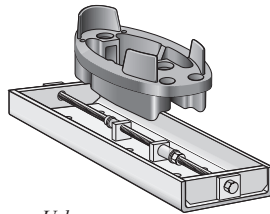
Mast heel for T-base,
Art. No. 502-110.



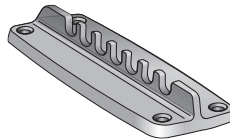
Mast heel for T-base,
Art. No. 502-048.



Mast heel for U-base or T-base,
Art. No. 502-089.



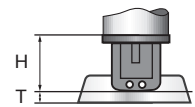
U-base,
Art. No. 510-061.



T-base,
Art. No. 510-106.

Heel plugs

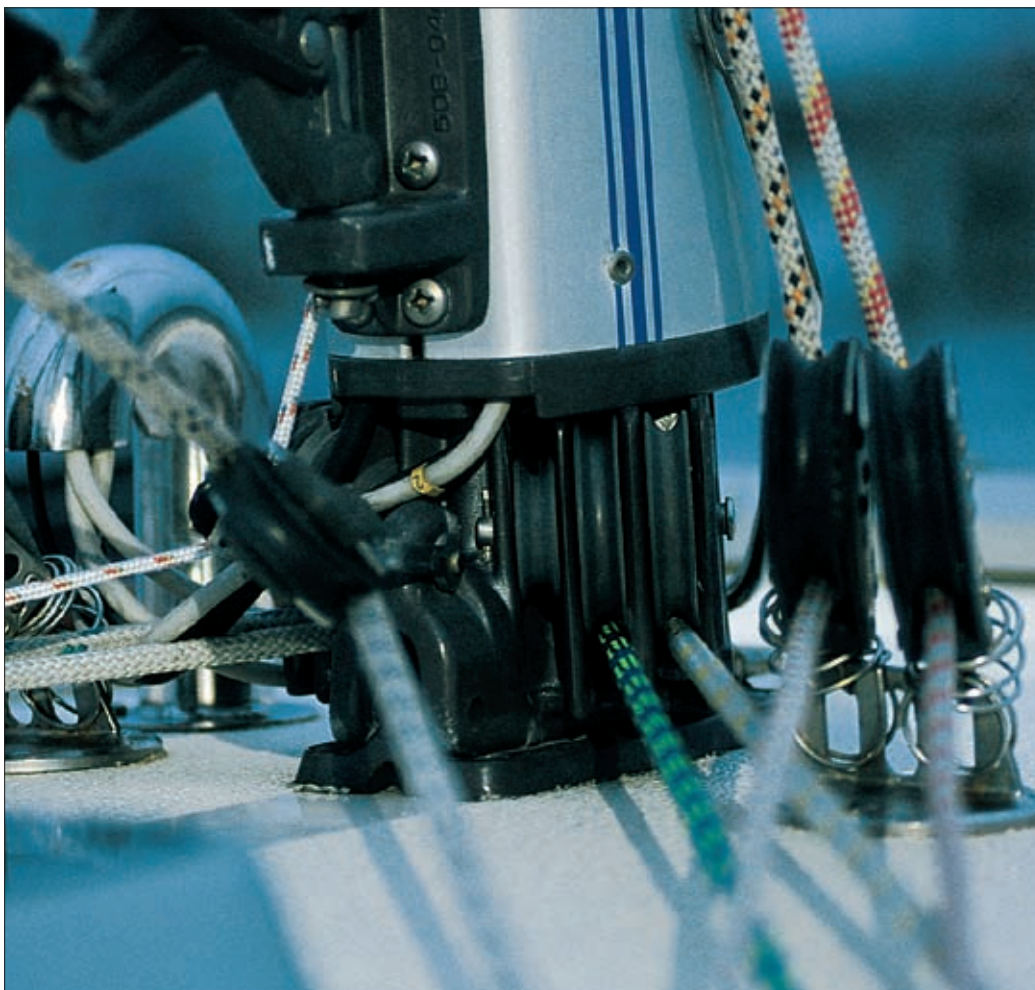
Serie	Mast section	Heel plug for deck-stepped and keel-stepped masts, Art. No.	Keel-stepped mast heel		H	U-base Art. No.	T	T-base Art. No.	T	
			for U-base Art. No.	for T-base Art. No.						
I	E122	502-086-01		502-113-02	82			Obsolete	-	
	E130	502-062-01								
	E138	Obsolete								
	D109	502-042-01								
	D121	Obsolete1								
	P111	502-037-01								
II	E155	502-054-01		502-048-01	105			Obsolete	-	
	E170	502-056-01								
	E177	502-055-01								
	E189	502-059-01								
	D137	502-069-01								
	D146	Obsolete								
	D160	Obsolete								
	R190		502-110-02							70
	R213		502-111-02							
	R214		502-098-01							
R235		502-112-02								
III	E206		502-087-01	502-087-02	70	510-061 Length 400 mm Width 140 mm	6	510-116	16	
	E224		502-088-01	502-088-02						
	E237		502-089-01	502-089-02						
	R232		502-096-01	502-096-02						
	R260		502-094-01	502-094-02						
	R290		502-097-01	502-097-02						
	E274		502-095-02	502-095-01						100
Large sections	C321			502-117-01	55			510-125-02	45	
	E365			502-118-01						
	F324			502-117-01						
	R370			502-118-01						



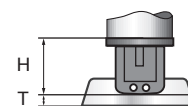
H = Height of heel, mm
T = Height of T-base, mm

Deck-stepped heels,

P-sections, E-sections, D-sections and R-sections



The integrated sheaves for these traditional Seldén heels are easy to replace.

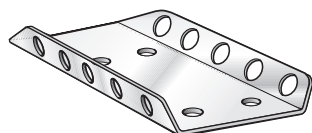


H = Height of heel, mm
T = Height of T-base, mm

G1 = Genoa 1 halyard
G2 = Genoa 2 halyard
M = Main halyard
TL = Topping lift
S = Spinnaker halyard
SL = Spinnaker lift

Deck-stepped heels, Series I

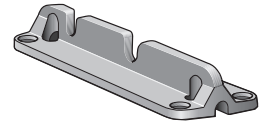
Art. No.	Design	H	T-base Art. No.	T	Remarks																
502-113-01	No exits	82	510-113	11	Rail: Art. No. 508-161																
502-036-05	90° <table border="1" style="margin-left: auto; margin-right: auto;"> <tr> <td>G1</td> <td>Ø45</td> <td>1</td> <td>6</td> <td>Ø45</td> <td>SL</td> </tr> <tr> <td>G2</td> <td>Ø45</td> <td>2</td> <td>5</td> <td>Ø45</td> <td>S</td> </tr> <tr> <td>TL</td> <td>Ø45</td> <td>3</td> <td>4</td> <td>Ø45</td> <td>M</td> </tr> </table>	G1			Ø45	1	6	Ø45	SL	G2	Ø45	2	5	Ø45	S	TL	Ø45	3	4	Ø45	M
G1	Ø45	1	6	Ø45	SL																
G2	Ø45	2	5	Ø45	S																
TL	Ø45	3	4	Ø45	M																
Obsolete	<table border="1" style="margin-left: auto; margin-right: auto;"> <tr> <td>TL</td> <td>Ø45</td> <td>1</td> <td>6</td> <td>Ø45</td> <td>M</td> </tr> <tr> <td>G1</td> <td>Ø45</td> <td>2</td> <td>5</td> <td>Ø45</td> <td>S</td> </tr> <tr> <td>G2</td> <td>Ø45</td> <td>3</td> <td>4</td> <td>Ø45</td> <td>SL</td> </tr> </table>	TL	Ø45	1	6	Ø45	M	G1	Ø45	2	5	Ø45	S	G2	Ø45	3	4	Ø45	SL	100	Wire/rope splices in exits 3 and 4, see remark above. Sheaves: Art. No. 504-320 (Ø 45 mm, width 13, hole Ø 8 mm)
TL	Ø45	1	6	Ø45	M																
G1	Ø45	2	5	Ø45	S																
G2	Ø45	3	4	Ø45	SL																
502-068-02	0° <table border="1" style="margin-left: auto; margin-right: auto;"> <tr> <td>1</td> <td>2</td> <td>3</td> <td>4</td> </tr> <tr> <td>Ø45</td> <td>Ø45</td> <td>Ø45</td> <td>Ø45</td> </tr> <tr> <td>G1</td> <td>TL</td> <td>M</td> <td>S</td> </tr> </table>	1	2	3	4	Ø45	Ø45	Ø45	Ø45	G1	TL	M	S	97	Wire/rope splices in exits 2 and 3, see remark above. Sheaves: Art. No. 504-321 (Ø 45 mm, width 13, hole Ø 10 mm)						
1	2	3	4																		
Ø45	Ø45	Ø45	Ø45																		
G1	TL	M	S																		



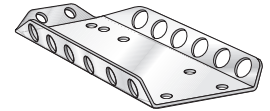
Rail, Art. No. 508-161: 176 x 90 mm.

Deck-stepped heels, Series II

Art. No.	Design/mast section	H	T-base, Art. No	T	Remarks
Obsolete	No exits	70	Obsolete	12	
502-048-02	No exits	105	510-105-02	12	Rail: Art. No. 508-143
Obsolete	No exits	70			
502-110-01	Mast section R190	145	510-113	11	Max. 45 mm sheave at exit 3 and 7.
502-110-03	Mast section R190				
502-111-01	Mast section R213		510-105-02	12	
502-098-01	Mast section R214				
502-112-01	Mast section R235				
502-049-04 90°					
Obsolete		125			
Obsolete		115			



T-base, Art. No. 510-105.



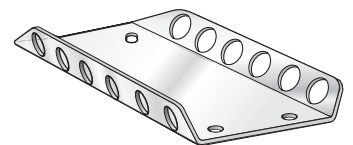
Rail, Art. No. 508-143: 230 x 100 mm.

Replacement sheaves for heels, Series II

Sheave	Art. No.	Dia., mm	Width, mm	Hole, dia., mm
	504-321	45	13	10
	504-325	70	13	10
	504-328	90	13	10

Deck-stepped heels, Series III and 274/185

Art. No.	Design/mast section	H	T-base, Art. No.	T	Remarks
502-087-01	E206, No exits	70	510-117-01	16	Rail: Art. No. 508-167
502-088-01	E224				
502-089-01	E237				
502-096-01	R232				
502-094-01	R260				
502-097-01	R290				
502-090-04		200			
502-095-01	E274, No exits	100	Obsolete	16	



Rail, Art. No. 508-167: 330 x 160 mm.

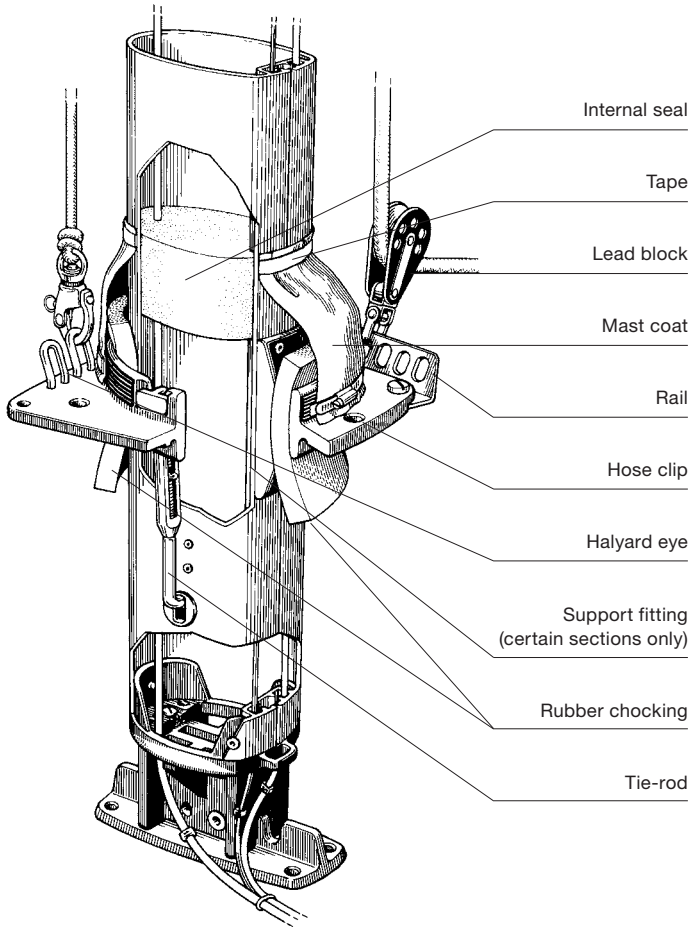
Replacement sheaves for heels, Series III

Sheave	Art. No.	Dia., mm	Width, mm	Hole dia., mm
	504-335	90	16	12

Rail, large masts

Mast section	Rail Art. No.	Dimensions mm
C321	508-179	415 x 190
E365		
F324		
R370		

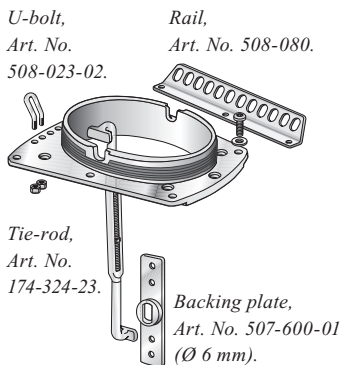
Deck ring system for keel-stepped conventional masts, E-sections and D-sections



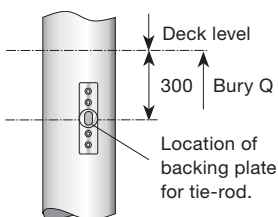
When the mast is keel-stepped, it is important to secure the deck to the mast, especially when the halyards are led via turning blocks attached to the deck ring. Otherwise, the lifting force of the halyards could lift the deck. Seldén traditional deck ring incorporates a “tie-rod system” to eliminate this lifting action. Rubber wedges are used to fix the mast in the deck ring.

Rails and halyard eyes are available as extras.

Deck ring arrangements E-sections and D-sections



Tie-rod will take halyard load not shroud load.



Mast section	Deck ring (tie-rod not included)			
	No extra function	+ Rail* 508-080 + 4 halyard eyes 508-023-02	Separate rail SB or PS incl. bolts*	Two tie-rod rigging screws incl. backing plates
E130	Obsolete	533-008-03 Deckring is drilled for rail + eye function	Included in casting	174-042-04
E138				
D129				
E155	Obsolete	533-011-04	508-080-01	174-042-04
E170				
D137				
D146				
E177				
E189	533-009-01 Size 3 253 x 200	533-009-04	508-080-02*	174-042-04
E206				
D160				
E224	533-010-01 Size 4 302 x 232	533-010-04	508-080-02*	174-042-04
E237				
E274	533-012-01 Size 5 338 x 248	533-012-04	508-080-02*	174-042-04

* Must not be used for genoa/main/spinnaker if RM > 43 kNm. Rail 508-080 bolted through deck can be used for RM < 130 kNm.



Wedgings, mast coats, clips E-sections

Mast section	Deck ring size	Wedging Art. No.	Mast coat Art. No.	Upper circumference, mm	Upper seal	Hose clip Art. No.
E122	No ring available		530-022	381	Tape	Depends on deck ring size
E130	Size 1	2 x 530-205	530-022	381	25 mm	312-204
E138		2 x 530-205 + 2 x 530-206	530-022	381		312-204
E155	Size 2	2 x 530-204 + 2 x 530-206	530-024	439		312-205
E170		1 x 530-204 + 1 x 530-205 + 1 x 530-206	530-025	473		312-205
E177	Size 3	2 x 530-204 + 2 x 530-206	530-026	500		312-206
E189/132B		4 x 530-202	530-027	539		312-206
E206/139B		2 x 530-202 + 2 x 530-203	530-028	568		312-206
E224	Size 4	2 x 530-202 + 2 x 530-203	530-029	630		2 x 312-202*
E237		4 x 530-202	530-030	660		2 x 312-202*
E274/185B	Size 5	2 x 530-202 + 2 x 530-207	530-031	752		2 x 312-203*

Rubber for wedgings

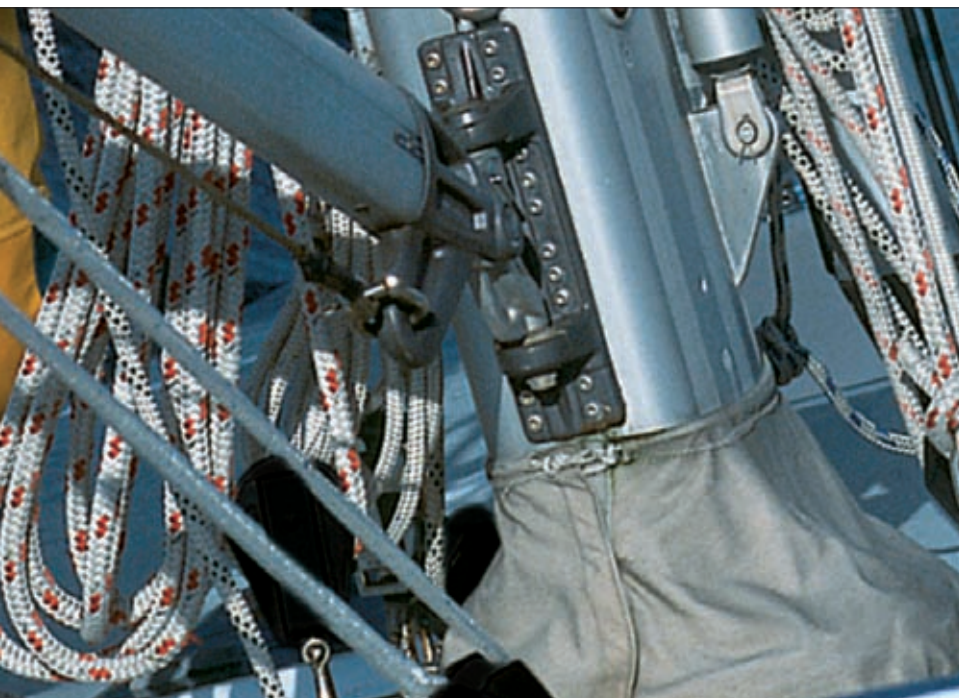
Art. No.	Dim., mm
530-202	20 x 150 x 150
530-203	10 x 150 x 150
530-204	25 x 110 x 150
530-205	20 x 110 x 150
530-206	10 x 110 x 150
530-207	20 x 150 x 225

Hose clips

Art. No.	Dim., mm min/max
312-202	130/165
312-203	150/180
312-204	175/205
312-205	200/231
312-206	251/282

* To be spliced.

Deck ring system for keel-stepped furling masts, R-sections



The deck ring system for keel-stepped furling masts has the same design as the conventional deck ring system. It incorporates the same features, including chocking system, internal sealing, and a tie-rod system to eliminate the lifting action of the halyards.

Deck rings

Mast section	Art. No. No extra function (dim., mm)	Art. No. incl. rail*	Art. No. Rail**	Art. No. Two tie-rod rigging screws incl. backing plates.
R190	533-013-01 (230 x 154)	533-013-02	508-155-01	174-042-04
R213	533-014-01 (256 x 154)	533-014-02	508-155-01	174-042-04
R214	533-009-01 (253 x 200)	533-009-02	508-080-02	174-042-04
R232	533-015-01 (282 x 180)	533-015-02	508-155-01	174-042-04
R235	533-015-01 (282 x 180)	533-015-02	508-155-01	174-042-04
R260	533-010-01 (302 x 232)	533-010-02	508-080-02	174-042-04
R290	533-012-01 (338 x 248)	533-012-02	508-080-02	174-042-04

* U-bolt (M8 x 53 mm) + nuts for halyard, Art. No. 508-023-02 1-4 can be fitted.

** Must not be used for genoa/main/spinnaker if RM > 43 kNm. Rail Art. No. 508-080 bolted through deck can be used for RM < 130 kNm.

Tie-rod is designed to take halyard load, not shroud load.

Wedgings, mast coats, clips

Mast section	Deck ring dia., mm	Wedging Art. No.	Mast coat		Upper circumference, mm	Upper seal	Hose clip Art. No.
			Art. No.	Dia., mm			
R190	230 x 154	2 x 530-202 + 2 x 530-203	530-025	141/220	473	Tape 45 mm	312-205
R213	256 x 154	2 x 530-202 + 2 x 530-203	530-027	159/268	539		312-206
R214	253 x 200	2 x 530-202 + 1 x 530-203	530-028	171/268	568		312-206
R232	282 x 180	3 x 530-202	530-028	171/268	568		312-206
R235	282 x 180	3 x 530-202	530-028	171/268	568		312-206
R260	302 x 232	2 x 530-202 + 1 x 530-203	530-030	195/312	660		2 x 312-202*
R290	338 x 248	3 x 530-207 + 1 x 530-203	530-031	226/337	752	2 x 312-203*	

* To be spliced.

Deck ring system for larger keel-stepped masts

The opening is held by a sturdy O-ring, squeezed vertically between two deck rings. The lower deck ring is permanently bolted to the deck head. When in place, it allows sufficient mast movement in all directions.



Deck rings

Mast section	Art. No.	(dim, mm)	Remarks
C321	533-016-01	(358 x 202)	Rails and tie-rods cannot be integrated.
E365	533-019-01	(405 x 225)	
F324	533-016-01	(358 x 202)	
R370	533-019-01	(405 x 225)	
F406	533-036-01	(583 x 383)	

Mast coats

Mast section	Deck ring size, mm	Inner sealing coat Art. No.	Outer canvas coat Art. No.
C321	358 x 202	530-038	530-040
E365	405 x 225	530-039	530-041
F324	358 x 202	530-038	530-040
R370	405 x 225	530-039	530-041
F406	583 x 383	530-069	-