

Installing the Colligo Line Clamp for torque and luff lines.

For the following part numbers:

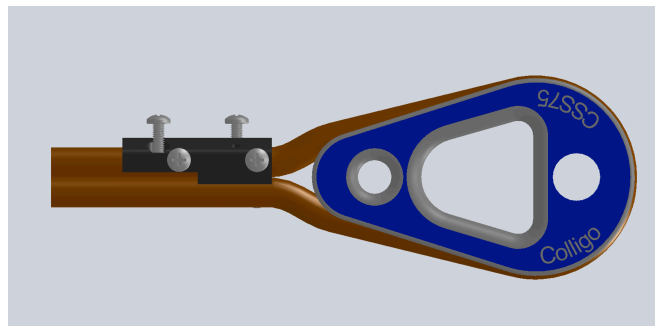
RC5-8
RC9-11
RC12-13
RC14-15

Tools

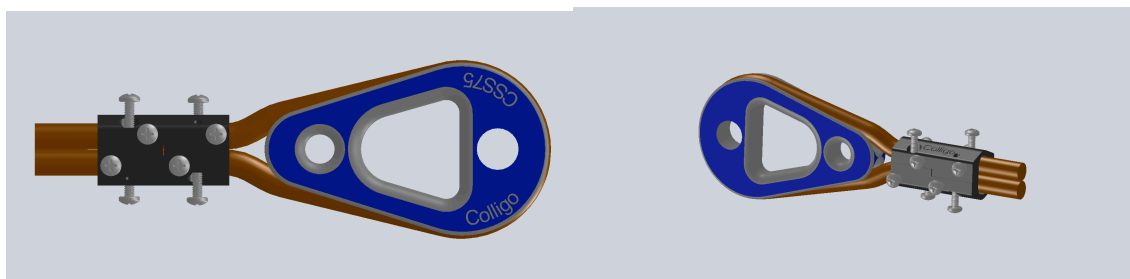
Use a Phillips screwdriver or drill/driver with the clutch set low. The Screws are 4 x 0.7 mm threads and the heads can be broken off easily if they are over-torqued.

1. Remove 4 clamping screws that hold the 2 clamp halves together and separate the 2 clamp halves. There is no need to remove the other 8 screws.
2. Place ½ of clamp onto rope in area shown, just in front of Line Terminator or thimble. You will want the clamp to be close enough to the Line Terminator to prevent the line from pulling off. If the line is a tight fit you may find it easier to flatten out the line somewhat to form an oblique that will fit into the Line Terminator or thimble easier. It is best to leave a minimum 3 inches (7.6 centimeters) of tail on the cut end of the line in case some length adjustment is needed. A nice feature of this clamp is that it allows you to unclamp the line and change the length if needed.

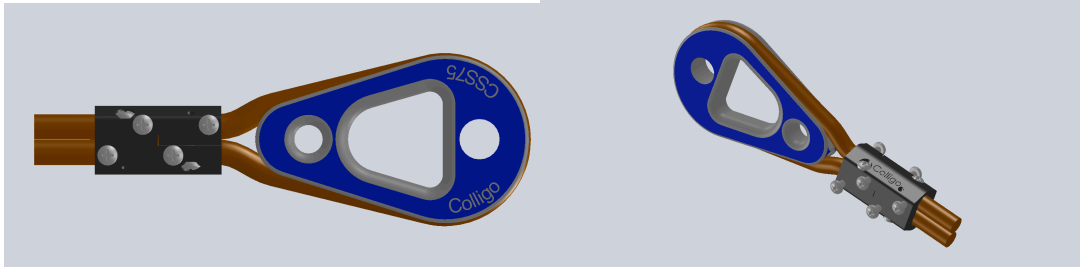
If desired PVC shrink tube can be used to cover the clamp also but must be place on the line prior to setting up the clamp.



3. Place second half of clamp onto the opposite line as shown.

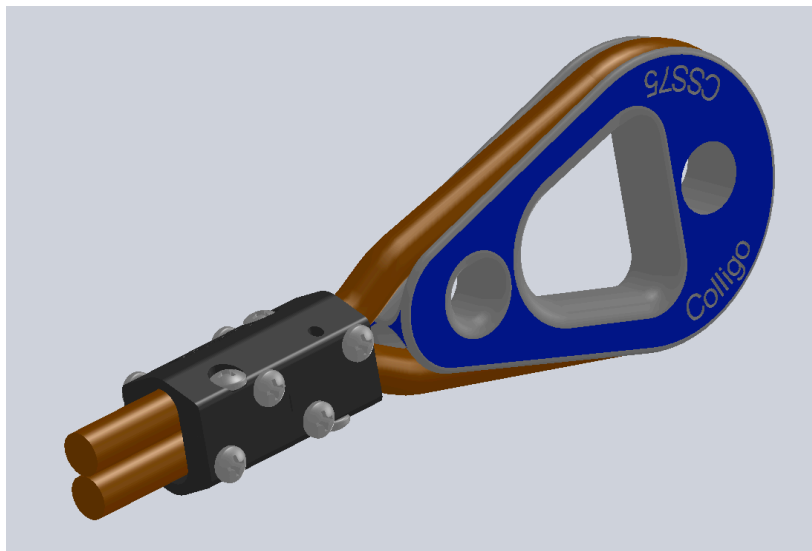


4. Align the 4 screw holes and drive the screws in until the screw heads are completely seated.



5. At this time the clamp can still be repositioned on the line. Take your time and make sure the clamp is in the position that you want it in. Make sure the line is fit tightly around the Line Terminator or thimble.

6. Drive the remaining screws in until the heads seat tightly against the clamp body. Do not use high torque on these screws as the heads will easily break off.



7. When finished you can cover the clamp and line tail with sail tape for a finished look and to prevent any snags.

Please see the website colligomarine.com for more information on the Colligo Line Clamp, including safe working load ratings for various lines.