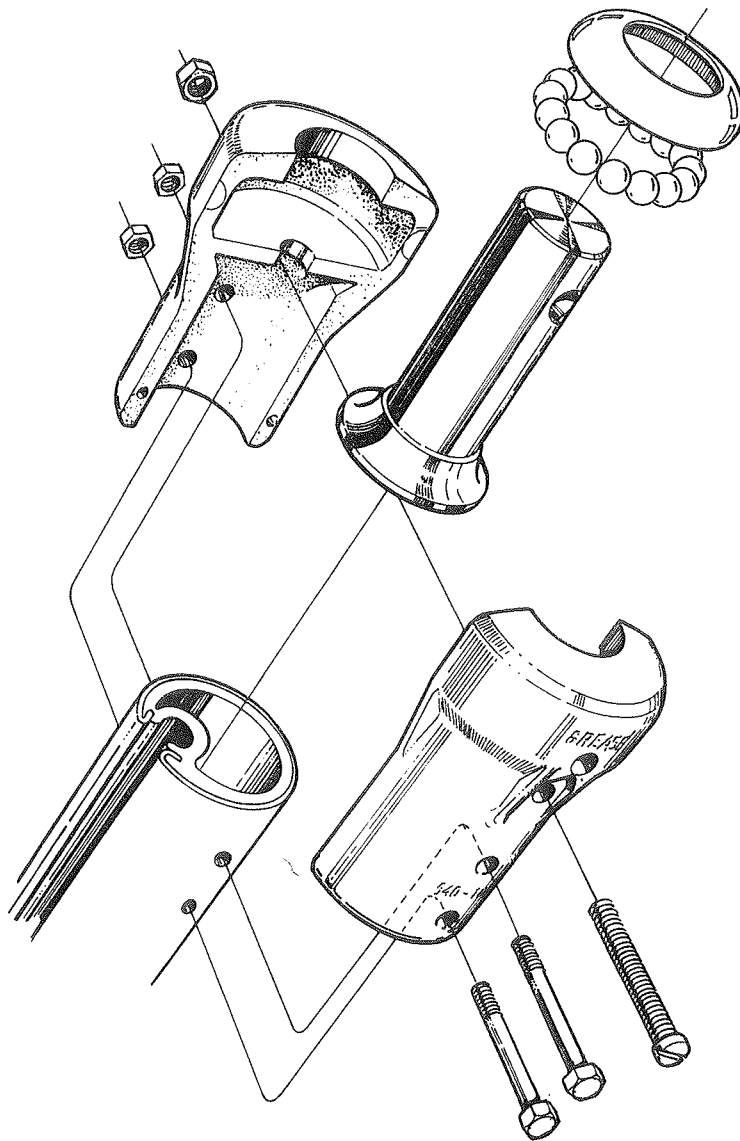


FURLIN'

MAIN FURLING & REEFING SYSTEM

OCT.-88/595-050-E

SPARE PARTS LIST



TYPE RB & RC

DESCRIPTION A

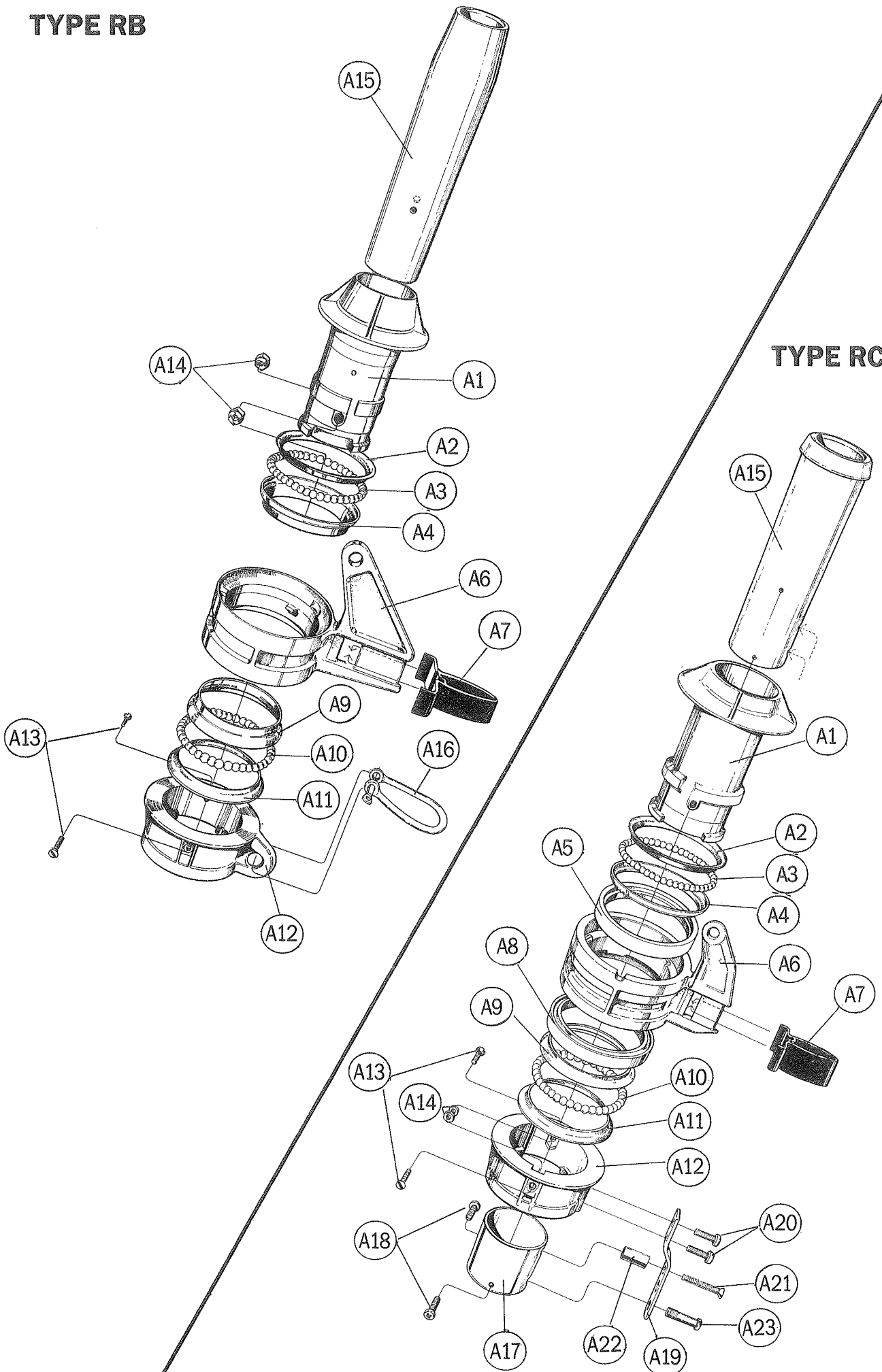
HALYARD SWIVEL

Item	Description	Type RB			Type RC		
		Dimension	Qty.	Mast extrusion 214/122 232/126 260/150	Dimension	Qty.	Mast extrusion 290/150
		Assembly number →		539-051-02	Assembly number →		539-201-02
A 1	Hub - Halyard swivel	ø84×115	1	539-051	ø102×140	1	539-201
A 2	Ball bearing ring-inner	ø74×ø56×7	1	539-059	ø84×ø66×8	1	539-220
A 3	Balls	ø6	34	539-034	ø8	30	539-128
A 4	Ball bearing ring-outer	ø76×ø57×15	1	539-058	ø90×ø66×11	1	539-219
A 5	Intermediate ring	—	—	—	ø88×ø67×9	1	539-218
A 6	Eye ring-rot.-track guide	ø84×95	1	540-107	ø102×136	1	540-209
A 7	Sliding insert	20×65	1	540-108	31×65	1	540-223
A 8	Intermediate ring	—	—	—	ø88×ø67×9	1	539-218
A 9	Ball bearing ring-outer	ø76×ø57×15	1	539-058	ø90×ø66×11	1	539-219
A10	Balls	ø6	34	539-034	ø8	30	539-128
A11	Ball bearing ring-inner	ø74×ø56×7	1	539-059	ø84×ø66×8	1	539-220
A12	Flange eye collar	ø84×33	1	539-052	ø102×45	1	540-219
A13	Screw	MFX 6×20	2	162-031	MFX 6×20	2	162-031
A14	Locking nut	M6	2	158-005	M6	2	158-005
A15	Sliding sleeve	ø50×180	1	540-109	ø60×213	1	540-222
A16	Twisted shackle	M6-12×46	1	307-039	—	—	—
A17	Collar	—	—	—	ø58×ø50×52	1	540-221
A18	Screw	—	—	—	MRX 6×8	2	155-624
A19	Supporting strip	—	—	—	24×97	1	540-220
A20	Screw	—	—	—	MRX 6×12	2	155-613
A21	Screw	—	—	—	MFX 6×30	1	162-044
A22	Bushing	—	—	—	ø12×6,5×21	1	306-535
A23	Screw	—	—	—	M12/ø10×30	1	155-030

Seldén Mast AB reserves the right to alter the design or specification without prior warning, to allow unrestricted future product development.

TYPE RB

TYPE RC



DESCRIPTION B

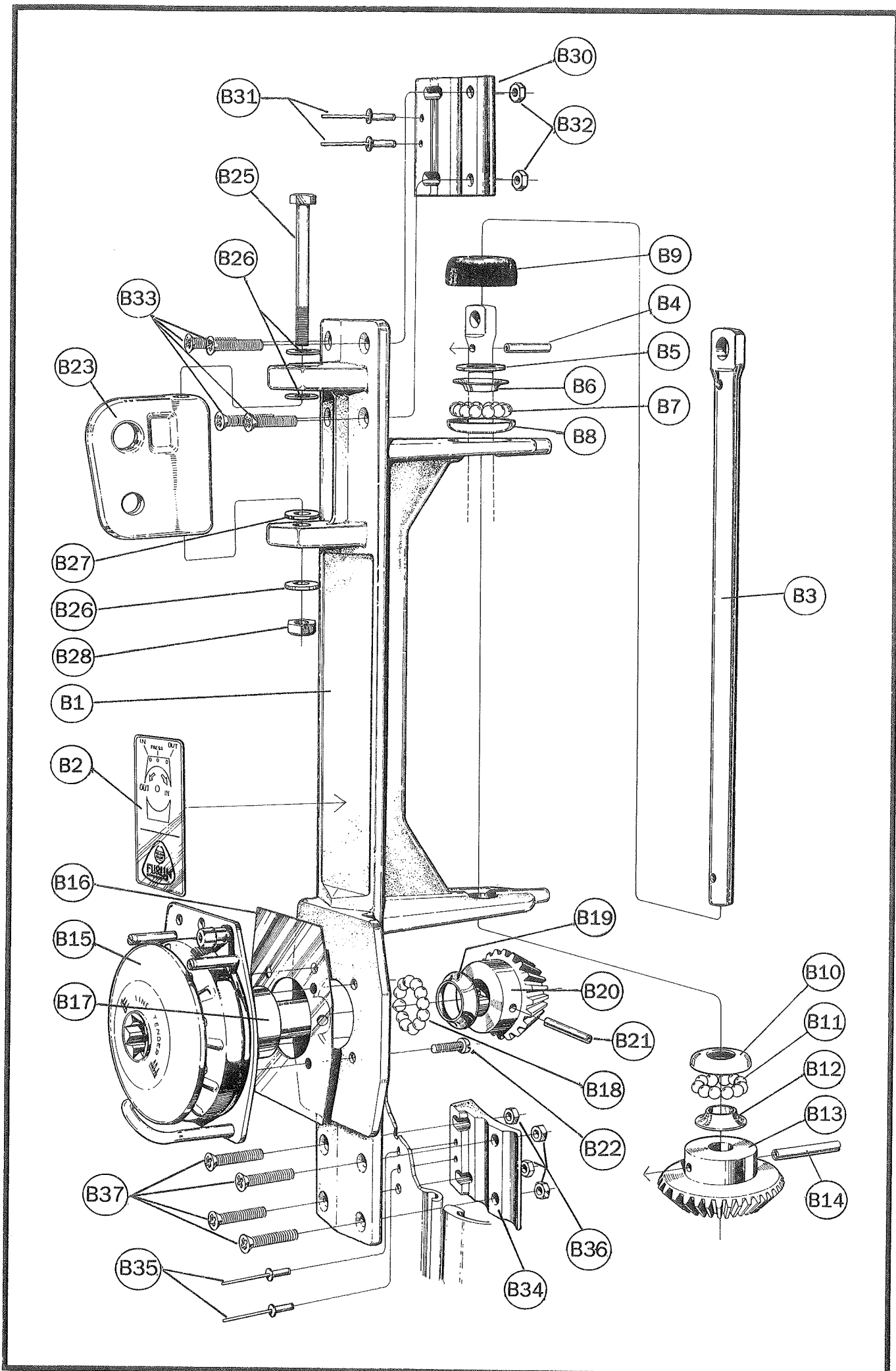
FURLING GEAR BRACKET

Item	Description	Type RB			Type RC		
		Dimension	Qty.	Mast extrusion 214/122 232/126 260/136	Dimension	Qty.	Mast extrusion 290/150
		Assembly number →		540-101-01 -02 -03	Assembly number →		540-102-01 -02 -03
B 1	Furling gear bracket	76×653	1	540-101	76×653	1	540-102
B 2	Label-Furling direction	43×108	1	591-192	43×108	1	591-192
B 3	Shaft	∅20×450	1	166-118	∅20×450	1	166-118
B 4	Spring pin	∅6×32	1	166-509	∅6×32	1	166-509
B 5	Washer	∅36×∅21×3	1	164-421	∅36×∅21×3	1	164-421
B 6	Ball bearing ring-inner	∅38×∅20×8	1	540-106	∅38×∅20×8	1	540-106
B 7	Balls	∅8	12	539-128	∅8	12	539-128
B 8	Ball bearing ring-outer	∅44×∅26×8	1	539-223	∅44×∅26×8	1	539-223
B 9	Protecting cover	∅56×18	1	540-126	∅56×18	1	540-126
B10	Ball bearing ring-outer	∅44×∅26×8	1	539-223	∅44×∅26×8	1	539-223
B11	Balls	∅8	12	539-128	∅8	12	539-128
B12	Ball bearing ring-inner	∅38×∅20×8	1	540-106	∅38×∅20×8	1	540-106
B13	Gear wheel	∅87.9×∅20×41.1	1	320-002	∅87.9×∅20×41.1	1	320-002 *) or 320-005
B14	Spring pin	∅8×45	1	166-503	∅8×45	1	166-503
B15	Furling gear line driver	∅110	1	523-525	∅110	1	523-525
B16	Insulator	138×110	1	530-629	138×110	1	530-629
B17	Ball bearing house	∅50×∅44×33,5	1	540-115	∅50×∅44×33,5	1	540-115
B18	Balls	∅8	12	539-128	∅8	12	539-128
B19	Ball bearing ring-inner	∅38×∅20×8	1	540-106	∅38×∅20×8	1	540-106
B20	Gear wheel	∅61.8×∅20×35,6	1	320-001	∅61.8×∅20×35,6	1	320-003 **) or 320-004
B21	Spring pin	∅8×45	1	166-503	∅8×45	1	166-503
B22	Screw	MC6S 8×20	4	153-009	MC6S 8×20	4	153-009
B23	Boom toggle: Boom extrusion:128/90 150/105 162/125 189/132 206/139	H=80, W=20 H=80, W=20 H=80, W=20 H=80, W=20 H=80, W=20	1 1 1 1 —	528-021-01 528-021 528-017 528-017 —	— H=80, W=20 H=80, W=20 H=80, W=20 H=80, W=20	— 1 1 1 1	— 528-021 528-017 528-017 528-017

*) Brass (320-002) or Stainless steel (320-005)

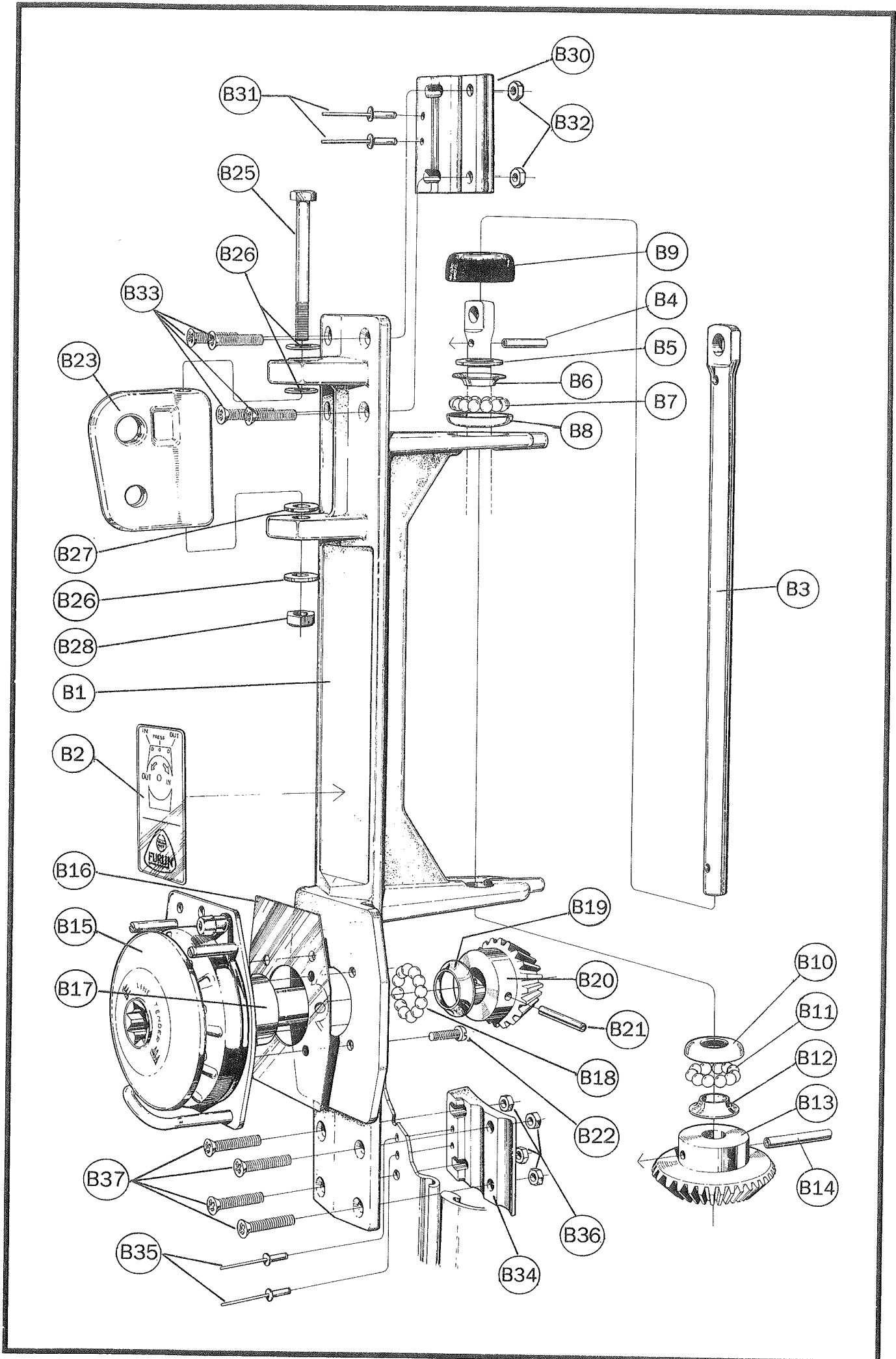
**) Brass (320-003) or Stainless steel (320-004)

To be continued on page 6



Continued from page 4

Item	Description	Type RB			Type RC		
		Dimension	Qty.	Mast extrusion 214/122 232/126 260/136	Dimension	Qty.	Mast extrusion 290/150
		Assembly number →		540-101-01 -02 -03	Assembly number →		540-102-01 -02 -03
B25	Screw	M6S 12×140	1	151-017	M6S 12×140	1	151-017
B26	Washer (Nylon)	ø24×ø13×2.4	3	164-005	ø24×ø13×2.4	3	164-005
B27	Washer (St. St.)	ø24×ø13×2.5	1	164-404	ø24×ø13×2.5	1	164-404
B28	Locking nut	M12	1	158-008	M12	1	158-008
B30	Backing plate	70×74	1	540-103	70×74	1	540-103
B31	Pop rivet LD 665	ø4.8×16.5	2	167-006	ø4.8×16.5	2	167-006
B32	Nut	M8	4	157-004	M8	4	157-004
B33	Screw	MFX 8×40	4	162-037	MFX 8×40	4	162-037
B34	Backing plate	70×74	1	540-103	70×74	1	540-103
B35	Pop rivet LD 665	ø4.8×16.5	2	167-006	ø4.8×16.5	2	167-006
B36	Nut	M8	4	157-004	M8	4	157-004
B37	Screw	MFX 8×40	4	162-037	MFX 8×40	4	162-037



DESCRIPTION C

TOP SWIVEL

Item	Description	Type RB			Type RC		
		Dimension	Qty.	Mast extrusion 214/122 232/126 260/136	Dimension	Qty.	Mast extrusion 290/150
		Assembly number →		540-104-01	Assembly number →		540-204-01
C 1	Ball bearing house-half	ø56×85	2	540-104	ø66×105	2	540-204
C 2	Screw	MCS 6×50	1	155-009	MCS 6×22	2	155-034
C 3	Locking nut	M6	1	158-005	M6	2	158-005
C 4	Ball bearing eye	ø36×ø22×74	1	540-105	ø44×ø22×75	1	540-205
C 5	Balls	ø8	12	539-128	ø8	15	539-128
C 6	Ball bearing ring-outer	ø44×ø26×8	1	539-223	ø52×ø34×8	1	539-111
C 7	Screw	M6S 6×51	2	151-034	M6S 6×61	2	151-035
C 8	Locking nut	M6	2	158-005	M6	2	158-005

DESCRIPTION D

OUTHAUL CAR-KIT

Item	Description	Type RB			Type RC		
		Dimension	Qty.	Boom extrusion 128/90 150/105 162/125	Dimension	Qty.	Boom extrusion 189/132 206/139
		Assembly number →		507-605-05	Assembly number →		
D 1	Outhaul car plate	202×58×4	1	507-605	—	—	—
D 2	Spacer	18×81×0.25	2	530-630*)	—	—	—
D 2	Spacer	18×81×0.50	2	530-631*)	—	—	—
D 3	Plate	18×81×2	2	507-606	—	—	—
D 4	Screw	MFX 4×5	4	162-043	—	—	—
D 5	Pin	ø8×20	4	166-072	—	—	—
D 6	Wheel	ø20×ø8×10	8	504-312	—	—	—
D 7	Roller chain	20 Wheels	2	504-340	—	—	—
D 8	Separator	42×113×1	1	537-079	—	—	—

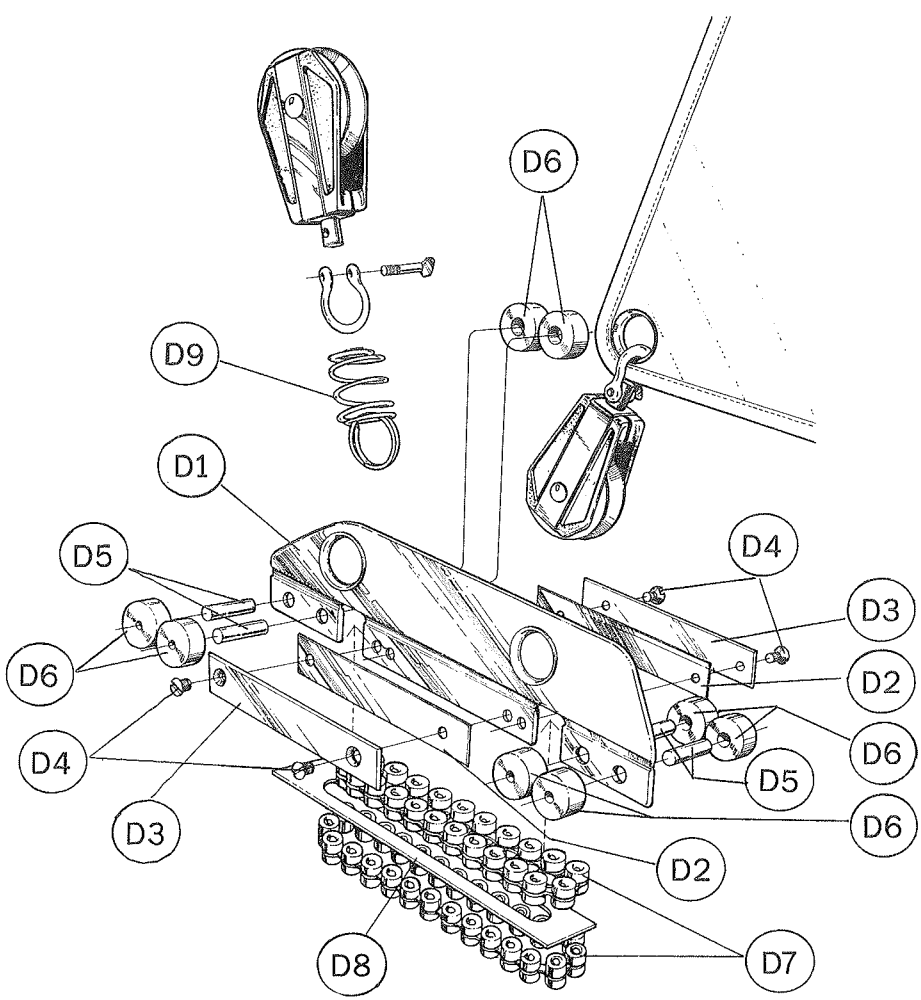
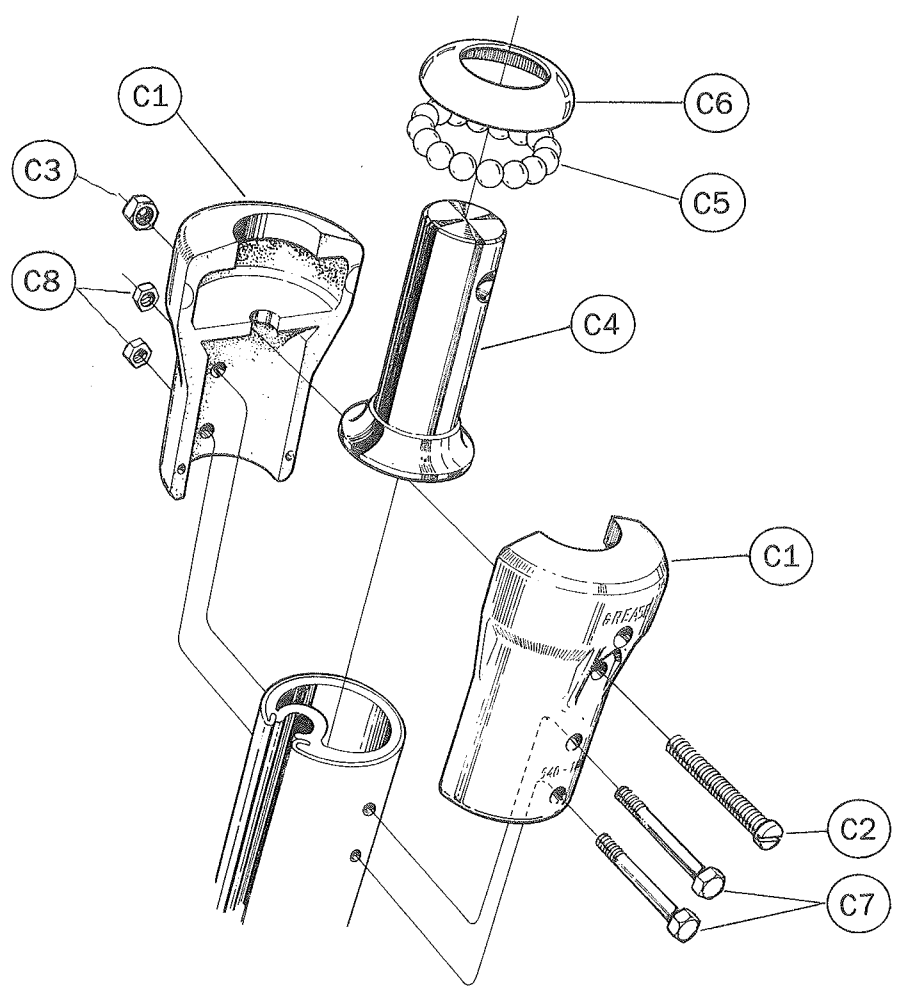
For Boom extrusion 189/132 & 206/139 a ball bearing track system is used for the outhaul.

—	Ball bearing track	—	—	—	22×13×3000	—	515-514**)
—	Track stop	—	—	—	For T32	2	520-504
—	Screw (for track+stop)	—	—	—	MFX6×40	***)	162-024
—	Ball bearing car	—	—	—	L=125	2	511-566
—	Strip	—	—	—	18×85	1	524-253
—	Washer	—	—	—	ø13×ø6×1,5	2	164-001
D 9	Spring (for block)	—	—	—	ø2,Dv30, L=47	1	308-021

*) Add max. number of spacer to minimize the space for the roller chain.

**) Total Length = ca 2/3 of boom length.

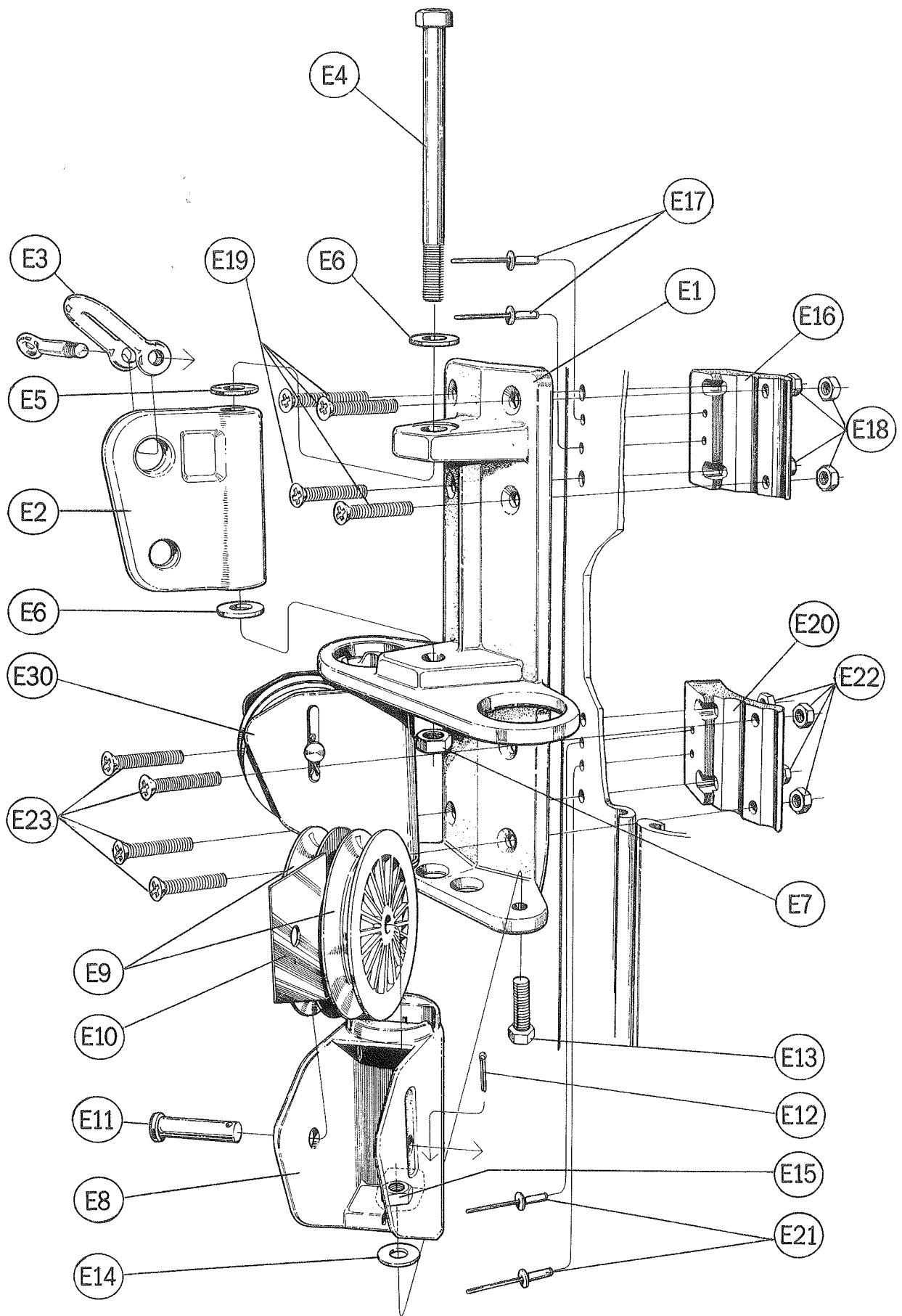
***) Qtv depending on track length.



DESCRIPTION E KICKERBRACKET/SWINGING LEAD

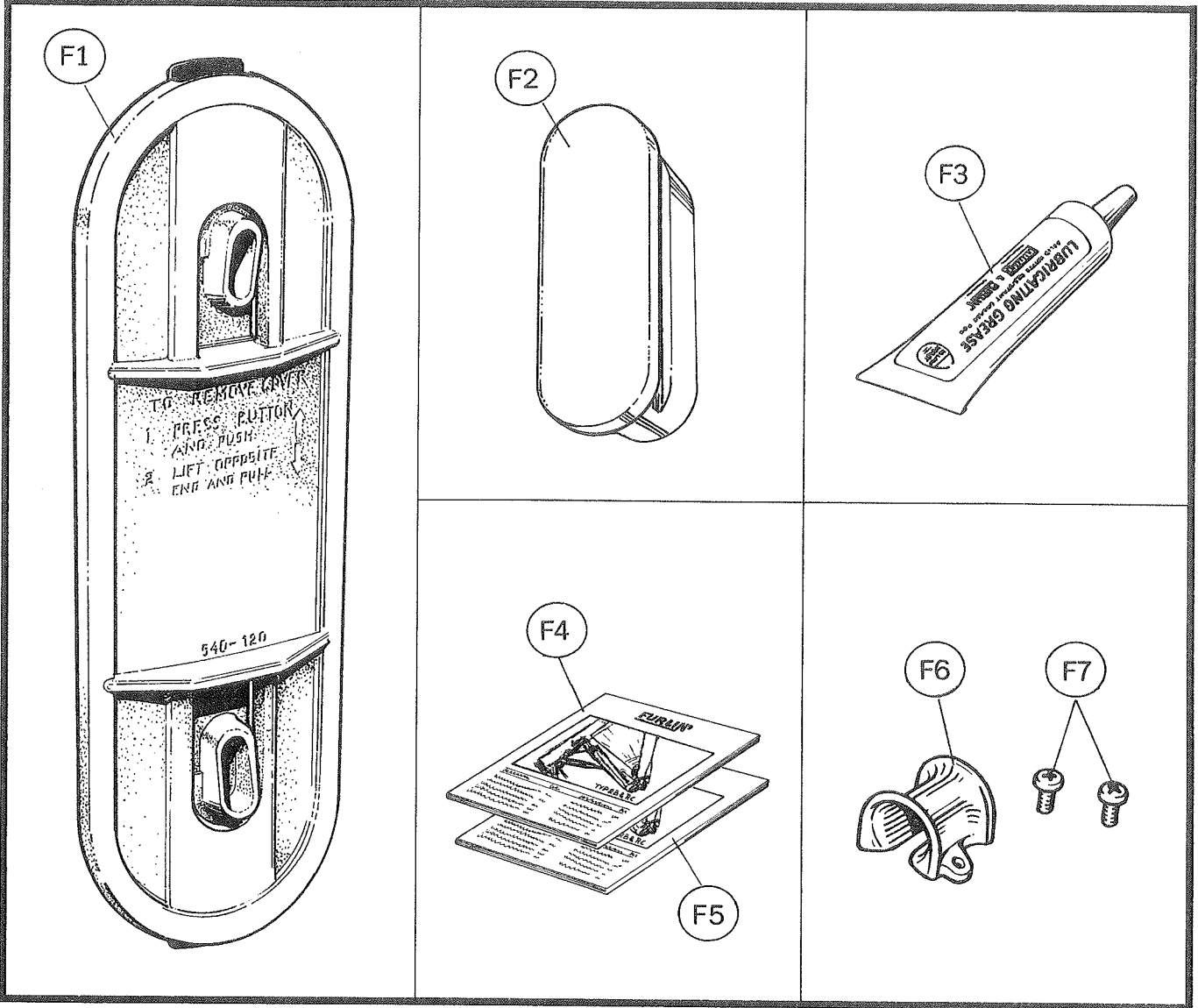
Item	Description	Type RB			Type RC		
		Dimension	Qty.	Mast extrusion 214/122 232/126 260/136	Dimension	Qty.	Mast extrusion 290/150
		Assembly number →		508-141-01	Assembly number →		508-141-01
E 1	Kicker/Lead bracket	76×262	1	508-141	76×262	1	508-141
E 2	Toggle	H=80, W=20	1	528-021	H=80, W=20	1	528-021
E 3	Shackle	M10 19×38	1	307-024	M10 19×38	1	307-024
E 4	Screw	M6S 12×130	1	151-022	M6S 12×130	1	151-022
E 5	Washer (St. St.)	ø24×ø13×2,5	1	164-404	ø24×ø13×2,5	1	164-404
E 6	Washer (Nylon)	ø24×ø13×2,4	2	164-005	ø24×ø13×2,4	2	164-005
E 7	Locking nut	M12	1	158-008	M12	1	158-008
E 8	Swinging lead-sheave house	For ø70×16	2	505-039	For ø70×16	2	505-039
E 9	Sheave	ø70×ø12×16	4	504-332	ø70×ø12×16	4	504-332
E10	Separator	77×59×2	2	537-034	77×59×2	2	537-034
E11	Clevis pin	ø12×52	2	165-403	ø12×52	2	165-403
E12	Split pin	ø3×18	2	301-012	ø3×18	2	301-012
E13	Screw	M6S 8×30	2	151-043	M6S 8×30	2	151-043
E14	Washer	ø17×ø8×2	2	164-002	ø17×ø8×2	2	164-002
E15	Locking nut	M8	2	158-006	M8	2	158-006
E16	Backing plate	70×74	1	540-103	70×74	1	540-103
E17	Pop rivet LD 665	ø4.8×16.5	2	167-006	ø4.8×16.5	2	167-006
E18	Nut	M8	4	157-004	M8	4	157-004
E19	Screw	MFX 8×40	4	162-037	MFX 8×40	4	162-037
E20	Backing plate	70×74	1	540-103	70×74	1	540-103
E21	Pop rivet LD 665	ø4.8×16.5	2	167-006	ø4.8×16.5	2	167-006
E22	Nut	M8	4	157-004	M8	4	157-004
E23	Screw	MFX 8×40	4	162-037	MFX 8×40	4	162-037

E 30	Swinging lead-assembly = Item E8-E15	1	505-039-01	505-039-01
------	--------------------------------------	---	------------	------------



DESCRIPTION F

Item	Description	Type RB			Type RC		
		Dimension	Qty.	Mast extrusion 214/122 232/126 260/136	Dimension	Qty.	Mast extrusion 290/150
		Assembly number →			Assembly number →		
F 1	Cover	72x207	1	540-120	72x207	1	540-120
F 2	Lubricating hole plug	25x60	1	319-574	25x60	1	319-574
F 3	Lubricating grease	ca 100 gram	1	312-501	ca 100 gram	1	312-501
F 4	Manual (English text)	A4	1	595-020E	A4	1	595-020E
F 4	Manual (Swedish text)	A4	1	595-020S	A4	1	595-020S
F 4	Manual (German text)	A4	1	595-020T	A4	1	595-020T
F 5	Spare parts list	A4	1	595-050E	A4	1	595-050E
F 6	U-lead	ø18x34	1	508-124	ø18x34	1	508-124
F 7	Screw Selftapping	MRX-TT6x12	2	155-703	MRX-TT6x12	2	155-703



DESCRIPTION G

SAIL FEEDER ASSEMBLY

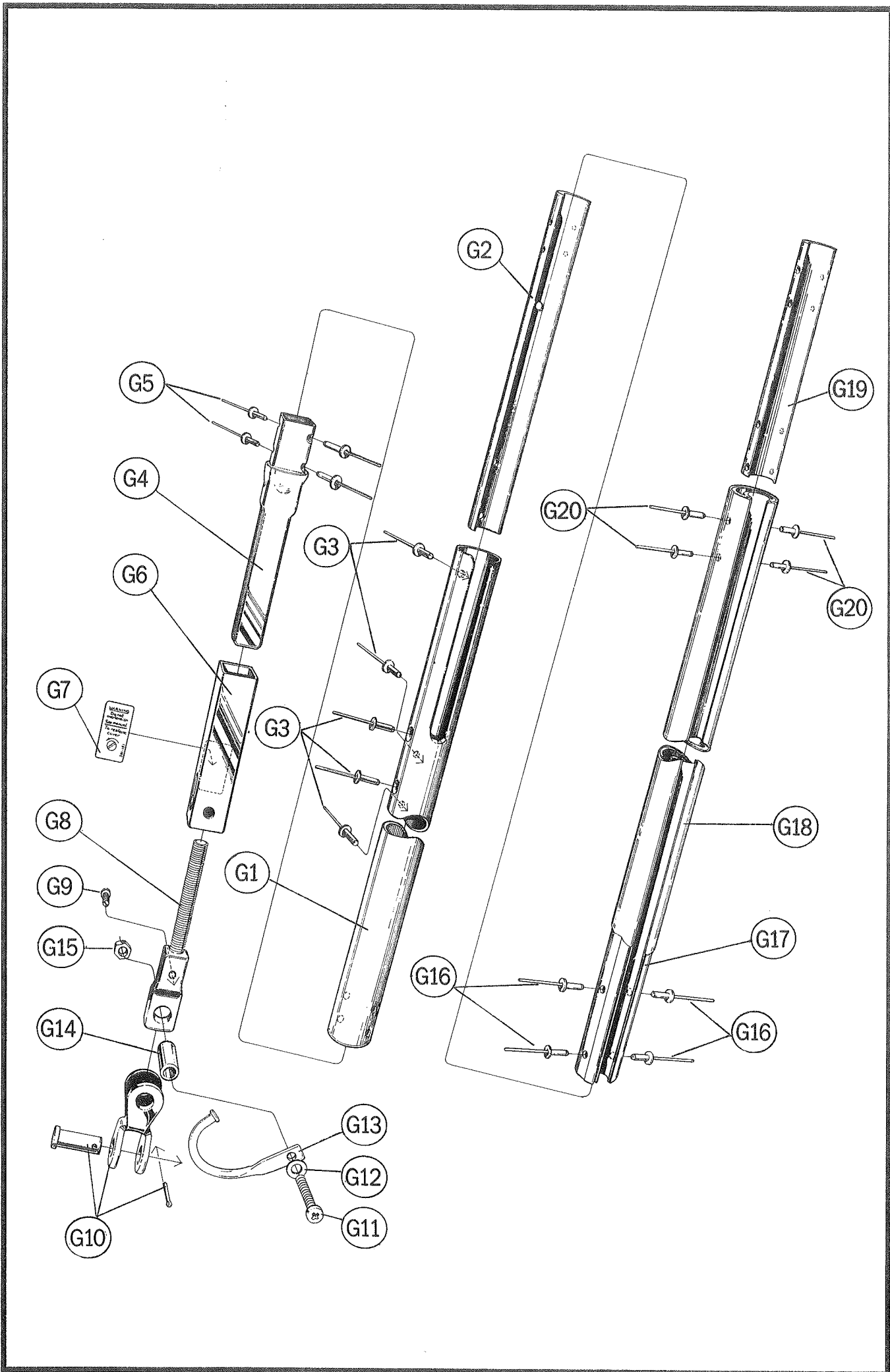
Item	Description	Type RB			Type RC		
		Dimension	Qty.	Mast extrusion 214/122 232/126 260/136	Dimension	Qty.	Mast extrusion 290/150
		Assembly number →		540-110-01	Assembly number →		540-206-01
G 1	Sail feeder tube	∅38×∅25×375	1	540-110	∅38×∅32×305	1	540-206
G 2	Joining sleeve	25/16, L=250	1	540-114	33/25, L=240	1	540-216
G 3	Pop rivet LK 850	∅6,4×12,7	5	167-003	∅6,4×12,7	6	167-003
G 4	Tensioning screw body	∅20×150	1	540-118	∅25×200	1	540-211
G 5	Pop rivet LD 850	∅6,4×12,7	4	167-004	∅6,4×12,7	6	167-003
G 6	Cover tube	∅25×105	1	540-119	∅25×135	1	540-212
G 7	Label	40×20	1	591-191	40×20	1	591-191
G 8	Eye bolt	M12-∅20×135	1	540-117	M16-∅25×165	1	540-210
G 9	Screw	MCS 6×16	1	155-015	MCS 8×20	1	155-012
G10	Toggle-fork/fork	1/2"	1	517-055	∅30×120	1	540-214
G10	Clevis pin	1/2"×32	1	incl. in part: 517-055	∅12×36	1	165-409
G10	Split pin	∅3×18	1	incl. in part: 517-055	∅3×18	1	301-012
G11	Screw	MRX 8×40	1	155-612	MC6S 8×50	1	153-007
G12	Washer	∅16×∅8×1,5	1	164-401	∅16×∅8×1,5	2	164-401
G13	Hook	∅8	1	540-124	∅10×110	1	540-213
G14	Bushing	∅13×∅8×26	1	306-517	—	—	—
G14	Clevis pin	—	—	—	∅16×36	1	165-554
G14	Split pin	—	—	—	∅3×24	1	301-013
G15	Locking nut	M8	1	158-006	M8	1	158-006
G16	Pop rivet LD 639	∅4,8×9,9	4	167-007	∅4,8×9,9	4	167-007

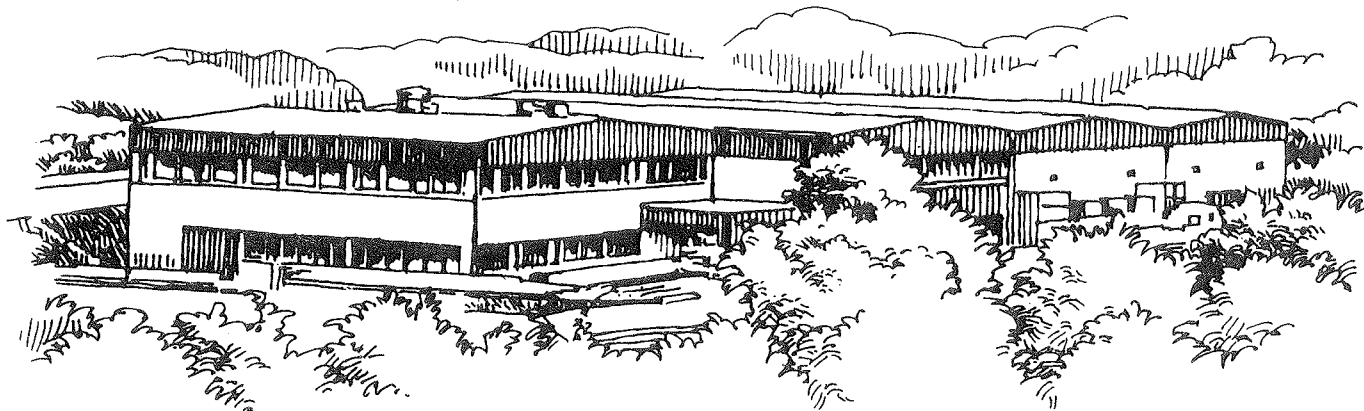
LUFF EXTRUSION 7700 MM-INCL. SPLICE

		Assembly number →		540-111-02	Assembly number →		540-217-02
G17	Luff extrusion	30/29, L=7700	1	540-111	38/38, L=7700	1	540-217
G18	Luff extrusion cover	∅32, L=7700	1	540-112	∅40, L=7700	1	540-218
G19	Joining sleeve	25/16, L=160	1	540-113	33/25, L=200	1	540-215
G20	Pop rivet LD 639	∅4,8×9,9	2×4	167-007	∅4,8×9,9	2×8	167-007

LUFF EXTRUSION 7700 MM-EXCL. SPLICE

		Assembly number →		540-111-01	Assembly number →		540-217-01
G17	Luff extrusion	30/29, L=7700	1	540-111	38/38, L=7700	1	540-217
G18	Luff extrusion cover	∅32, L=7700	1	540-112	∅40, L=7700	1	540-218





Seldén Mast AB is, and has been for many years, the leading manufacturer of aluminium masts in Northern Europe. Our aim from the start in 1960 has been to be in the forefront for quality and product development. Situated on Sweden's west coast, we are in a good position for practical testing under heavy conditions.

In 1983 we launched the Type B FURLEX jib furling & reefing system for forestays from 6 to 8 mm diameter. This was followed a year later by types C and D for forestays from 8 to 14 mm diameter.

FURLEX rapidly became a global success, and in 1987 the FURLIN' in-mast roller reefing system for mainsails was introduced.

Working to the highest quality standards comes naturally to us at Seldén Mast AB. We know there can be no compromise with the sea!. Experienced designers, top quality materials, attention to detail during assembly, and the selection of knowledgeable dealers, creates a strong back-up chain for all our products. It is also your assurance of total reliability even under the worst weather conditions.

Made in Sweden



SELDÉN MAST AB

Redegatan 11
S-421 77 V. Frölunda,
Sweden

Telephone:
Nat. | 031-29 21 90
Int. | +46 31 29 21 90

Telefax:
Nat. | 031-29 71 37
Int. | +46 31 29 71 37

Telex:
200 26 selden s