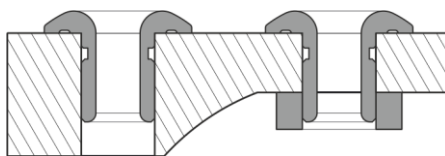
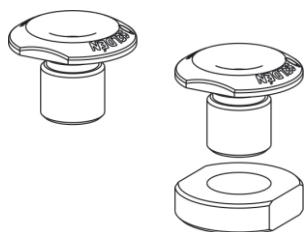


Through deck lead

The Seldén through deck lead can be used with a nut, (included in the kit), or without depending on the thickness of the deck. In both cases the lead must be fitted with glue. The nut will help to secure the lead during the gluing process.

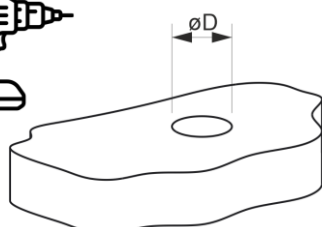
The drill size for the hole to be drilled can be found in table 1 below.



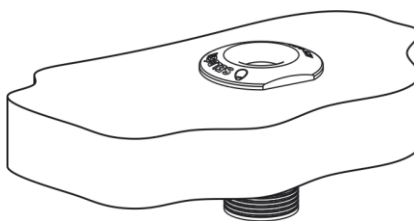
Part No	øD
420-510-01	10
420-511-01	12
420-512-01	16

Tabel 1

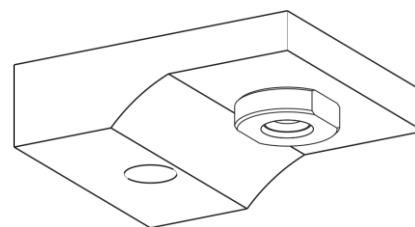
Installation guide



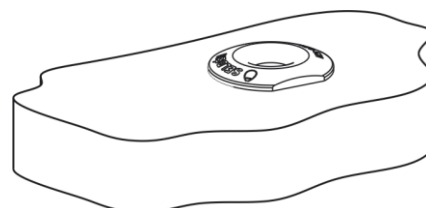
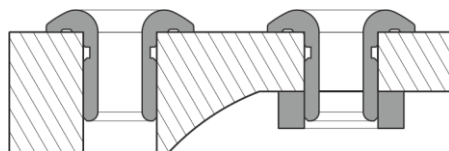
1. Drill a hole in the deck according to table 1



2. Place lead through the deck



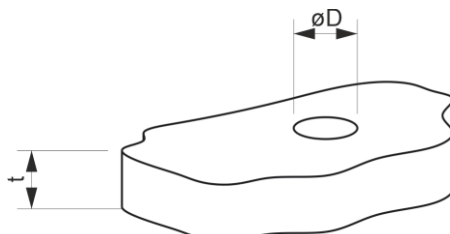
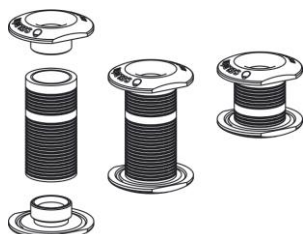
3. Fit nut if lead protrudes through the deck



Through deck, lead two-sided

The two-sided Seldén through deck lead is a three-part design. Two deck eyes are screwed into a distance tube. The distance tube can be cut in length to suit different thicknesses. Grooves in the tube makes is easy to make straight cut with standard metal saw.

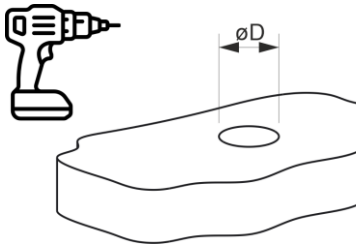
Max and min thickness of deck, and recommended drill size, can be found in table 2 below.



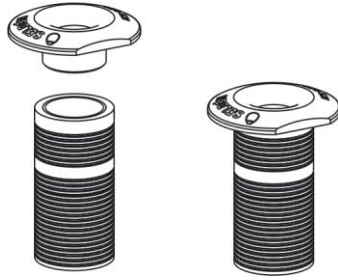
Part No	øD	t _{min}	t _{max}
420-520-01	12	12	30
420-521-01	15	12	30
420-522-01	19	14	40

Tabel 2

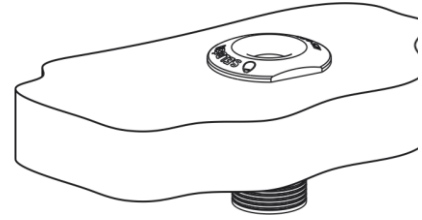
Installation guide



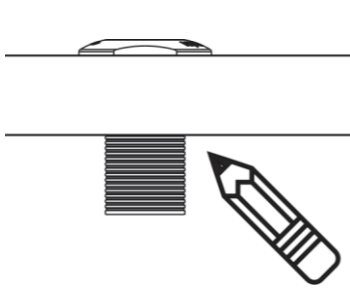
4. Drill a hole in the deck according table 2



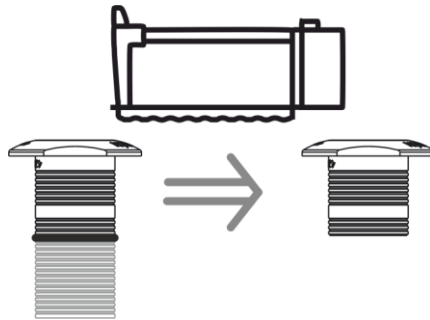
5. Fit upper eye to tube



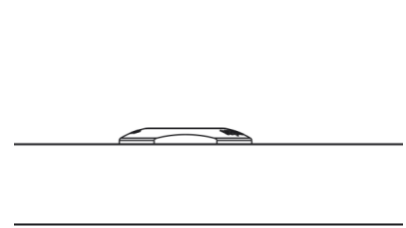
6. Place lead in the deck



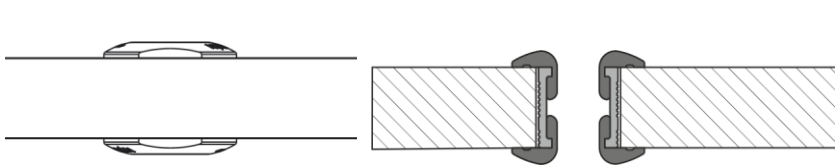
7. Mark the thickness of the deck on the tube



8. Cut the tube with metalsaw at the mark



9. Place the lead and tube in the deck, make sure the tube not protudes on the outside of the deck



10. Fit the second lead into the tube